

BACK-TO-SCHOOL GUIDE

(Lien vers la version française [ICI](#))



2024-2025



TABLE OF CONTENT

THINGS TO REMEMBER WHEN SCHOOL STARTS !	2
ORGANIZATION OF THE START OF THE SCHOOL YEAR.....	3
SCHOOL OPENING HOURS	4
RESTAURANT SERVICE (OPTIONAL)	4
SCHOOL TRANSPORTATION SERVICE (OPTIONAL).....	4
EXTRACURRICULAR ACTIVITIES (APS) PER SEMESTER*	4
UNIFORM, SCHOOL SUPPLIES AND TEXTBOOKS	5
PARENTS' MEETING AND ELECTION OF DELEGATES	6
SCHOOL CALENDAR.....	6
YOUR CONTACTS AT ICE	7

THINGS TO REMEMBER WHEN SCHOOL STARTS !

- Reminder to New students: the start of the school year is only possible after registration and signature of the prior KHDA 'Parent-School Contract', with the coordinator Sara Atat (compliance@icedubai.org).
- Label all your children's belongings so that they come back to you. In case of loss, please contact the *objets trouvés* | *Lost & found* (at restaurant 1).
- Have all textbooks and school supplies. Reminder: the iPad from CM1 up, delivered at the beginning of the school year for direct orders (info [here](#)). Culture & Co manuals ([lists](#)).
- The weather is hot, hence kindly provide:
 - A reusable large water bottle, labeled with the child's name
 - A cap labeled with the child's name
- For students who are not registered in the school canteen:
 - Use a thermal 'lunch-box', for a balanced lunch meal, already hot if necessary, in an airtight insulated container, easy to open,
 - Snack(s)
 - Reminder: Home-made meals are not reheatable in school
- **The uniform** is mandatory except on the last Friday of each month, as is Friday, August 30, 2024. Reminder: shoes must be closed.
- Make sure that you are familiar with the **PRONOTE** academic communication platform (in case of loss of username / password: contact pa.principal@icedubai.org)
- Plan for the transportation

ORGANIZATION OF THE START OF THE SCHOOL YEAR

PRE-K (PS)	Monday, August 26	Tuesday, August 27	Wednesday, August 28	Thursday, August 29	Friday, August 30
School hours	Back to school in half classes, accompanied by parents (about 40 minutes in class per day)		Half class per group (approximately 1h30/day), accompanied by parents		Normal Friday schedule
	Group 1 PS-A 8:00-8:40 Group 2 PS-A 8:50-9:30 Group 1 PS-B 9:40-10:20 Group 2 PS-B 10:30-11:10	Group 2 PS-A 8:00-8:40 Group 1 PS-A 8:50-9:30 Group 2 PS-B 9:40-10:20 Group 1 PS-B 10:30-11:10	Group 1 PS-A + Group 1 PS-B: 7:50-9:20 Group 2 PS-A + Group 2 PS-B: 9:40-11:10	Group 1 PS-A + Group 1 PS-B: 7:50-9:20 Group 2 PS-A + Group 2 PS-B: 9:40-11:10	Normal bilingual timetable 7:55-12:00
Healthy snack, provided by parents ("snack-box")	NO	NO	YES	YES	YES
For students who subscribed to the service before August 19/14:					
Restaurant (Starts Sep 2)	NO	NO	NO	NO	NO
Bus transportation	NO	NO	NO	NO	YES

KG1 (MS)	Monday, August 26	Tuesday, August 27	Wednesday, August 28	Thursday, August 29	Friday, August 30
School hours	10:00am-2:00pm	7:55am-3:30pm	7:55am-3:30pm	7:55am-3:30pm	7:55-12:00
For students who subscribed to the service before August 19/14:					
Restaurant	YES	YES	YES	YES	NO
Bus transportation	NO	YES	YES	YES	YES

KG2 (GS)	Monday, August 26	Tuesday, August 27	Wednesday, August 28	Thursday, August 29	Friday, August 30
School hours	10:30am-3:30pm	7:55am-3:30pm	7:55am-3:30pm	7:55am-3:30pm	7:55-12:00
For students who subscribed to the service before August 19/14:					
Restaurant	YES	YES	YES	YES	NO
Bus transportation	Return at the end of the day only	YES	YES	YES	YES

1st to 8th grade	Monday, August 26	Tuesday, August 27	Wednesday, August 28	Thursday, August 29	Friday, August 30
School hours	7:55am-3:30pm	7:55am-3:30pm	7:55am-3:30pm	7:55am-3:30pm	7:55-12:00
For students who subscribed to the service before August 19/14:					
Restaurant	YES	YES	YES	YES	NO
Bus transportation	Return at the end of the day only	YES	YES	YES	YES

9th to 11th grade	Monday, August 26	Tuesday, August 27	Wednesday, August 28	Thursday, August 29	Friday, August 30
School hours	7:55am-4:30pm	7:55am-4:30pm	7:55am-4:30pm	7:55am-4:30pm	7:55-12:00
For students who subscribed to the service before August 19/14:					
School Restaurant	YES	YES	YES	YES	NO
Bus transportation	Return at the end of the day only	YES	YES	YES	YES



SCHOOL OPENING HOURS

- Doors open at: 7:45am – classes start at 7:55am
- Parents, please leave the school: before 08:05am
- From Pre-K to 8th grade: Monday, to Thursday 7:55am-3:30pm, Friday 7:55am-12:00pm
- Grades 9, 10 and 11: Monday to Thursday 7:55am-**4:30pm**, Friday 7:55am-12:00pm

RESTAURANT SERVICE (OPTIONAL)

- For the 1st week, refer to the previous tables
- **Registration before August 19, 2024.**
- Any registration after August 19 will be processed within 7 working days
- The meals provided are: starter, main course, dessert, hot service.
- Register via the App « **Spare** » (steps: [HERE-pdf](#) or [HERE-website](#)).
- Our caterer is **Ben's Farmhouse**, their [Website](#) (Note: no Canteen Cards)
- Because Fridays end at noon (12:00) there is no restaurant on those days.

SCHOOL TRANSPORTATION SERVICE (OPTIONAL)

- For the 1st week, refer to the previous tables
- **Registration before August 14, 2024.**
- After this date, allow 7 working days for the application of any registration processed directly with the transport manager: bus@icedubai.org
- ATTENTION for children registered for the bus, in the classes of KG2 (GS) to Gr. 11 (1ère)
 - **No school bus service on the morning of the first day of school, but the return trip at the end of the day is assured**, Monday 26th August.
 - Two-way journeys operate from Tuesday 27th August, except for Pre-K (PS)
- Reminder: for safety reasons it is forbidden to change buses, unless changing of service.
- Register through [this link](#), before August 14 (read the school bus policy [HERE](#))

EXTRACURRICULAR ACTIVITIES (ECA) PER SEMESTER*

ICE offers activities after the end of the school day from Monday to Thursday. We advise you to register as soon as possible to guarantee your spot.

* Attention, novelty: Registration is done per semester (2 times annually).

The list of ECAs can be consulted from [this link](#) (ECA updates, ICE website).

Information also available on the page <https://icedubai.org/get-informed>



UNIFORM, SCHOOL SUPPLIES AND TEXTBOOKS

- The ICE school **uniform** is mandatory. It is composed of **regular**, and **sports** clothing (view the uniform [HERE](#)). Shoes must be closed and of dark color. Purchase your uniform at **Threads Store, Cityland Mall**, near Global Village. Phone: 800THREADS (8473237) [https:// www.threadsme.com](https://www.threadsme.com) - [FLYER](#)
- For an optimal school start, please make sure you have the entire list of **textbooks and school supplies** before the start of the year (on website & below).

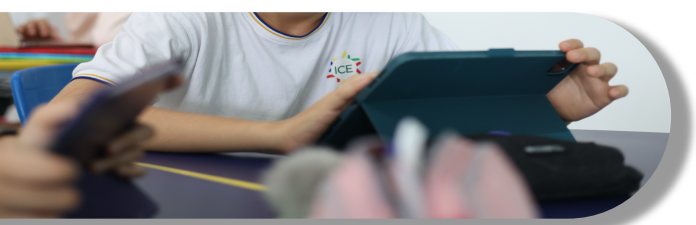
Early Birds ! While you can buy them from a variety of vendors, to make it easier for you, the **manuals** are available at our partner **Culture & Co** at the page [Back-to-school/ICE](#). They offer a **10% discount on any order placed between June 20 and July 20**, through their website or in-store.

- [List of textbooks and school supplies PRE-KG](#)
 - [List of textbooks and school supplies KG1](#)
 - [List of textbooks and school supplies KG2](#)
 - [List of textbooks and school supplies Grade 1](#)
 - [List of textbooks and school supplies Grade 2](#)
 - [List of textbooks and school supplies Grade 3](#)
 - [List of textbooks and school supplies Grade 4](#)
 - [List of textbooks and school supplies Grade 5](#)
 - [List of textbooks and school supplies Grade 6](#)
 - [List of textbooks and school supplies Grade 7](#)
 - [List of textbooks and school supplies Grade 8](#)
 - [List of textbooks and school supplies Grade 9](#)
 - [List of textbooks and school supplies Grade 10](#)
 - List of textbooks and school supplies Grade 11: [by email later](#)
- If your child (in CM1, or above) does not yet have an iPad configured by ICE, please contact the Information Technology Department (IT@icedubai.org) before 11 August. Each student will receive their tablet configured in class on the first day of school, or bring their own if they already have it.

Any information on the purchase and/or configuration of the iPad: [HERE](#).

Unconfigured iPads will not be allowed and subject to confiscation.

- Please refer to the [Digital Tools Policy](#), [Cyber-Bullying Policy](#), and the Internal Regulations ([RI](#)) which are an integral part of the Parent-School Contract.





PARENTS' MEETING AND ELECTION OF DELEGATES

- Introduction meeting with the new families at ICE, parents accompanied by their children: Friday 23 August, at 10:00 am in person, Restaurant 2 (Zone 2)

All teachers and parents introductory meetings will be held via Zoom, on the following dates:

- Pre-K (PS) parent-teacher meeting: August 26, at 4:30 p.m.
 - Grade 1 (CP) parent-teacher meeting: August 27, at 5:30 p.m.
 - 6th grade parent-teacher meeting: August 28, at 5:30 p.m.
 - KG1 (MS): August 29, at 5:30 p.m.
 - KG2 (GS): September 2, at 5:30 p.m.
 - 2nd grade (CE1): September 3, at 5:30 p.m.
 - 3rd grade (CE2): September 4, at 5:30 p.m.
 - 4th grade (CM1): September 5, at 5.30 pm
 - 5th grade (CM2) course: September 9, at 5:30 p.m.
 - 7th: September 10, at 5:30 p.m.
 - 8th: September 11, at 5:30 p.m.
 - 9th: September 12, at 6:30 p.m.
 - 10th: September 16, at 6:30 p.m.
 - 11th: September 17, at 6:30 p.m.
- The election of parent delegates will be announced via **Pronote**.

SCHOOL CALENDAR

The 2024-2025 school calendar can be viewed [here](#).

The screenshot shows a detailed school calendar for the 2024-2025 academic year. It includes columns for months from August to July. Key events are highlighted in various colors: green for school holidays, yellow for school events, and blue for public holidays. A legend at the bottom identifies the color coding for different types of days.



YOUR CONTACTS AT ICE

For precise and rapid answers, contact the appropriate correspondents:



Principal, Vice Principal: pa.principal@icedubai.org

Director of primary school : director.primary@icedubai.org



Admissions Office (information, administrative documents, invoices or other relating to school registration): admission@icedubai.org



Related to the KHDA contract: compliance@icedubai.org

Primary school life (from preschool to CM2): For any questions relating to absences, lateness, authorizations, exits, early departures, please contact primary.studentlife@icedubai.org



Secondary school life (middle school and high school): For any questions relating to absences, lateness, authorizations, exits, early departures, please contact secondary.studentlife@icedubai.org



School transport: For any questions relating to registration, deregistration, change of bus or address, please contact: bus@icedubai.org



Clinic: For any questions related to allergies, illness, medications, please contact doctor@icedubai.org and nurse@icedubai.org



School restaurant: For any questions relating to the canteen: registration, un-registration, etc., please contact info@bensfarmhouse.com



ECA: For any questions relating to extracurricular activities: registration, cancellation, etc., please contact eca@icedubai.org



Accounting: For any questions related to tuition payments, invoicing, transfers, receipts: please contact accountant@icedubai.org

Note: payments are possible by Skiplly, or bank transfers.



IT: If you have any questions about your child's email address or how to set up the iPad, please contact it@icedubai.org



Students with Special Needs (SEN-SENDSCO department): For any questions relating to Students with Special Needs, with an IEP, 'PAP, 'PPRE', and/or a diagnosis or possible dyslexia, speech therapy, ADHD, Autism or other learning disability, please contact sendco.ice@icedubai.org



BONNES VACANCES D'ETE !

HAPPY SUMMER VACATION!

